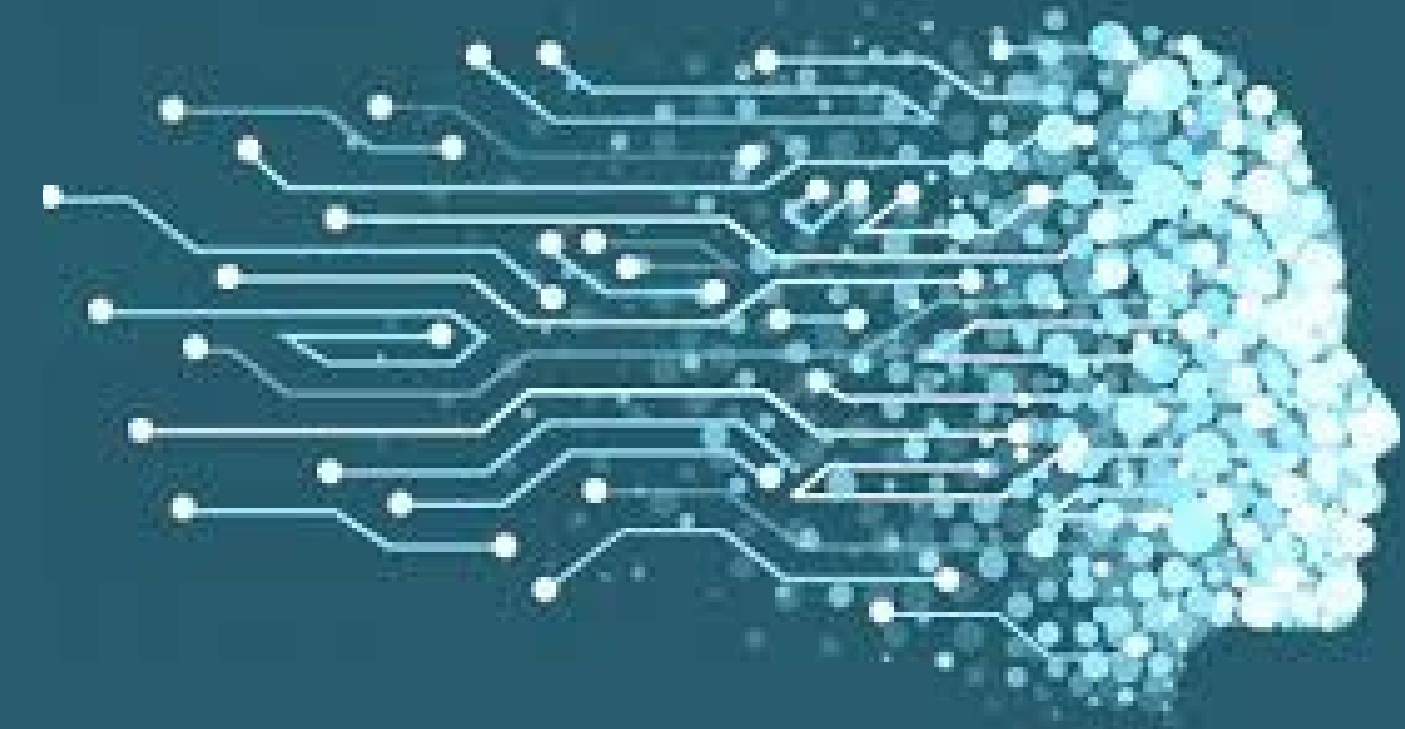




SR UNIVERSITY

WARANGAL, TELANGANA

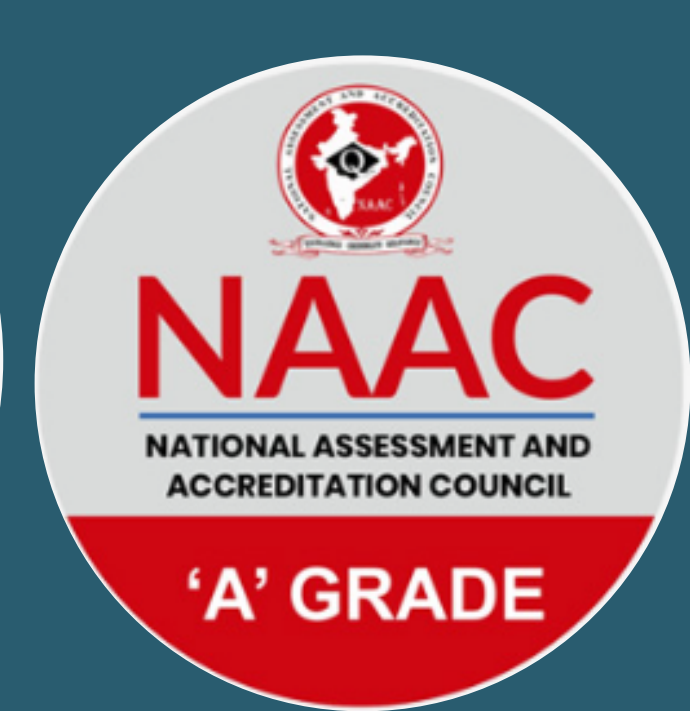
DEPARTMENT OF CIVIL ENGINEERING



ONLINE COURSE ON

APPLICATION OF ARTIFICIAL INTELLIGENCE AND MACHINE LEARNING IN RESEARCH

21 TO 25 AUGUST 2023



About the University:

Sri Rajeshwara Educational Society, the parent body of SR University is a 45-year-old conglomerate of educational institutions with more than 90,000 students and 10,000 teaching and non-teaching staff members. SR Educational Academy governs 95 Educational Institutions across Telangana and Andhra Pradesh.

The goal of SR University is to create an innovative learning educational ecosystem whose graduates significantly contribute to the growth of Telangana and India. Coupled with our exceptional staff, technology-enabled infrastructure provides a foundation for entrepreneurial learning through experimentation. Cutting-edge technology is embedded in classrooms and laboratories, helping students familiarize themselves with the latest technological trends in the market.

The collaborative entrepreneurial ecosystem provides curricular, co-curricular, and extra-curricular opportunities for everyone to contribute, thrive and create a lasting impact. The system includes strong ties with industry and international educational institutions.



About the Department:

An engineering degree is a stepping stone for the best high-paying, fast-growing career. The School of Engineering @SRU offers undergraduate, postgraduate and doctoral programs in Electronics and Communication Engineering, Electrical and Electronics Engineering, Mechanical Engineering, and Civil Engineering. Our innovative faculty and opportunity-rich ecosystem train the next generation of engineers to be technical leaders and change-makers with social consciousness and business acumen.

The core curriculum of the engineering programs is based on a set of common interdisciplinary courses to promote interdisciplinary team-based learning. By recognizing the need for more innovative engineers with an entrepreneurial mindset, SRU offers industry-relevant cutting-edge technology courses that enable the students to come up with innovative solutions to real-world problems. The department of civil engineering has grown into a full fledged department with specialization in all major area of civil Engineering. The department has been recognized as research center and has laboratories with state of the art equipment to facilitate the research work.

About the Course:

The major industries using Artificial Intelligence (AI) and Machine Learning (ML) include Agriculture, Education and Infrastructure, Healthcare, Transport, Banking, Cyber Security, Manufacturing, Entertainment, Hospitality, and others. You'll learn about the latest AI research, algorithms, and applications, and gain hands-on experience with cutting-edge tools and techniques. This course offers a comprehensive exploration of aspects of artificial intelligence. This course is best suited for faculty members and students seeking to build world-class expertise in Artificial Intelligence and Machine Learning and emerging technologies.



Resources Persons:

The Sessions will be handled by the experts From IITs/ NITs/ Central University of India.

How to Apply

The Programme is open to all faculty and Students/Research scholars of all Engineering, Colleges and other allied disciplines in India. Participants will get an e-certificate upon successful Completion of the Course. Interested candidates can apply online by clicking below link or QR Code

<https://forms.gle/5mqPZtLGwXzov4to7>

Registration Deadline: 20.8.2023

Registration: FEE is 500. (Five Hundred only).

BANK Details:

Account Name : SR University

Bank Name : Canara Bank

Account No. : 120001989889

IFSC Code : CNRB0002450

Branch : Balasamudram , Hanamkonda.



The interested individuals may register on the first come first serve basis. Since, this course is limited to 50 participants.

Address for Correspondence

For any queries regarding this Programme, Please feel free contact the coordinator

Dr.G.Shyamala, Professor,

Department of Civil Engineering,

SR University, Warangal, Telangana , India

Email: g.shyamala@sru.edu.in

Phone No: 9942181934

