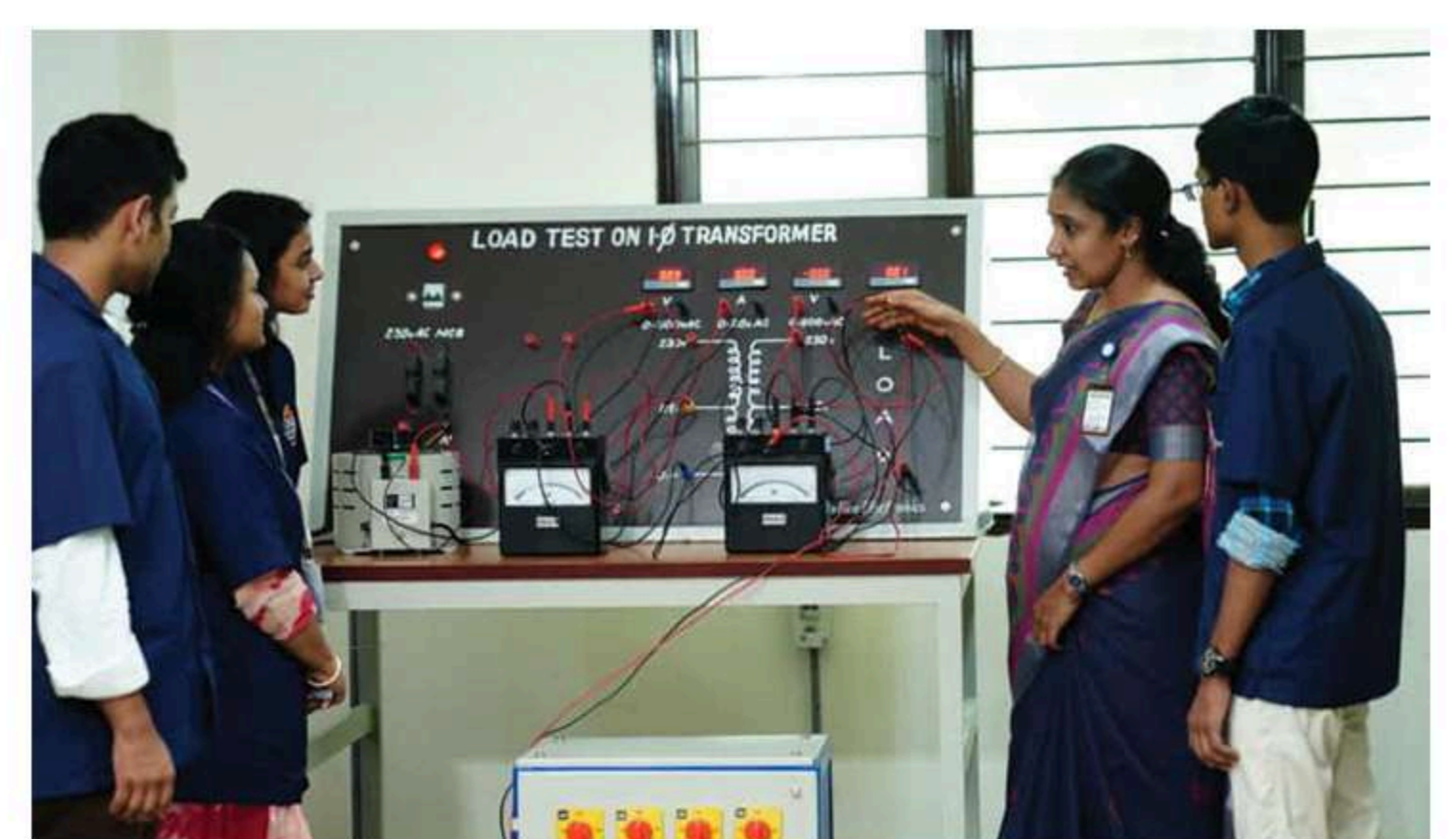


# Shaping sustainable mobility with smart energy

- Learn. Innovate.  
Lead the electric era



**SRU**

**ELECTRICAL AND  
ELECTRONICS ENGINEERING  
SCHOOL OF ENGINEERING**

Partnership with

**SIEMENS**

**TVS Training  
& Services**

**MC Coreta**

**sts**  
SURYA TECH SOLUTIONS

**ElectRoMation  
TECHNOLOGIES**

**HIEE**

**SHUBHITHA S  
ENERGY SOLUTIONS**



# Electrical and Electronics Engineering

The Department of Electrical and Electronics Engineering leads in innovation-driven education and research, empowering the next generation of engineers to shape the future of smart, connected, and sustainable technologies. Aligned with emerging industry trends, the department offers specialization tracks in Electric Vehicles, Renewable Energy, Robotics & Automation. Students benefit from customizable learning paths through Minors and Honors programs, flexible credit structures, and global exposure via semester-abroad opportunities.

## Specializations

- Develop sustainable mobility solutions through smart EV systems, Battery Technology, and Intelligent Transport design.
- Empower the clean energy shift by mastering Solar, Wind, and Hybrid systems enhanced with Data-driven Optimization.
- Foster creativity and precision in Building Autonomous, Intelligent Robotic systems for real-world applications.
- Drive Industrial transformation by designing Smart, Connected Automation systems with IoT and Advanced Control Technologies.

## Programs Offered

### Bachelor

B.Tech. ( Electrical and Electronics Engineering )

In partnership with Siemens and TVS TS

B.Tech. (EEE) - with specialization in Renewable Energy

B.Tech. (EEE) - with specialization in Electric Vehicles

B.Tech. (EEE) - with specialization in Robotics and Automation

### Master

M.Tech. ( Power Electronics )

### Doctoral

Ph.D. ( Electrical Engineering )

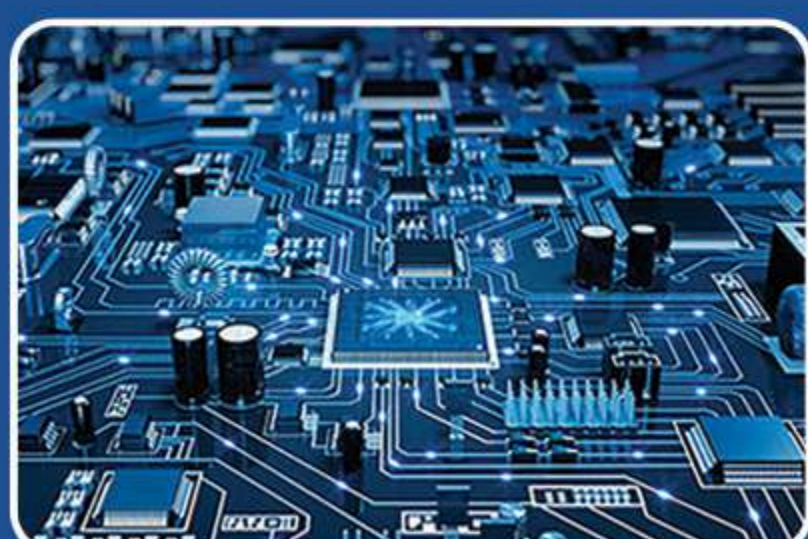
## Academic Highlights

- Skill Development aligned with Future Technologies to enhance employability and drive campus placements.
- Real-time Exposure to Industry Trends in Renewable Energy, Smart Grids, and Automation through workshops and expert sessions.
- Advanced Digital and Hardware Labs that simulate real-world engineering challenges and accelerate research.
- Robust Ecosystem of Collaborations with R&D Centres, startups, and global institutions for hands-on training and internships.
- Focus on Interdisciplinary Research and Innovation, integrating AI, ML, and electronics for smart systems development.
- Experienced Faculty, Mentors, and Industry Experts guiding students every step of the way.

## Career Options for EEE Students



Power & Energy sector



Electronics



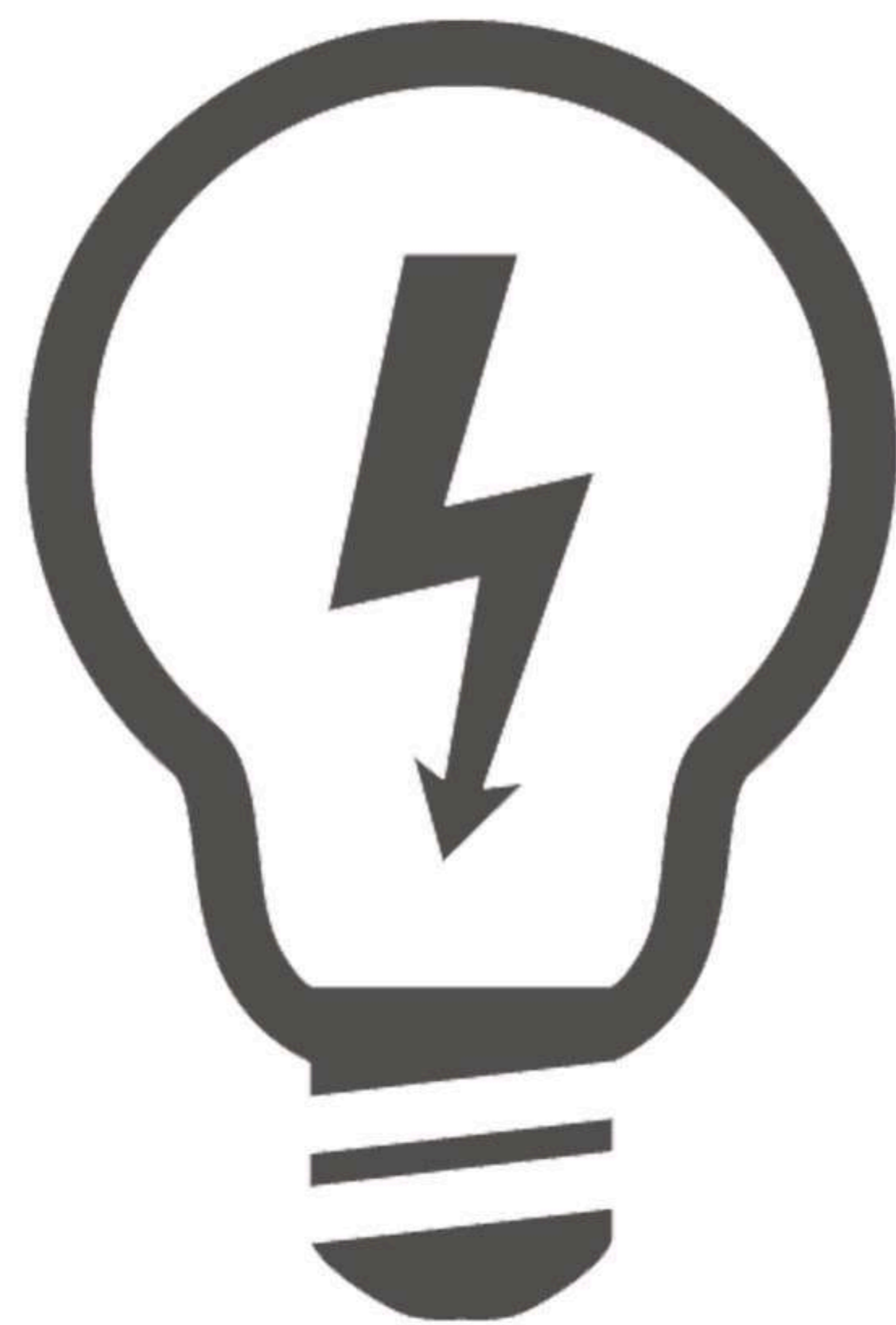
Automation



Electric Vehicles



AI & ML





## Uniqueness in Curriculum

- Industry-relevant curriculum
- Project-based & Experiential Learning
- Industry-oriented Internships
- Under Graduate Research
- Industry-recognized Certifications
- Career Readiness Training

## Co-Curricular Activities

- Gamification
- Hackathons & Contests
- Student Clubs & Technical Societies
- Tech Fests & Innovation Challenges
- Start-Up Culture & Entrepreneurship
- Continuous Mentoring

## Faculty from World-Class Universities Including IITs & NITs



**Dr. Md Mujahid Irfan**  
Associate Professor & Head  
Ph.D. from JNTU, Hyderabad



**Dr. Ram Raghotham Rao Deshmukh**  
Professor  
Ph.D. from Cardiff University, UK



**Dr. Vinod Kumar DM**  
Professor  
Ph.D. from IIT Kanpur



**Dr. B. Vedik**  
Associate Professor  
Ph.D. from NIT Hamirpur



**Dr. Chandan Kumar Shiva**  
Associate Professor  
Ph.D. from IIT Dhanbad



**Dr. Sachidananda Sen**  
Associate Professor  
Ph.D. from IIT Roorkee



**Dr. Buddhadeva Sahoo**  
Assistant Professor  
Ph.D. from IIT Bhubaneswar



**Dr. Faizan A Khan**  
Assistant Professor  
Ph.D. from IIT Dhanbad

## Department Achievements






**800+**  
Research articles

**100+**  
Patents



## Semester Abroad

Explore global opportunities through our semester exchange programs and accelerated masters programs with top international universities

University	 <b>LSUS</b> <small>Institute for Nonprofit Administration &amp; Research</small>	 <b>UMKC</b> <small>UNIVERSITY OF MISSOURI KANSAS CITY</small>	 <b>PNW</b> <small>PURDUE UNIVERSITY NORTHWEST</small>	 <b>Yeshiva University</b>	 <b>Northeastern University</b>
Progression Pathway	3.5+1.5	3.5+1.5	3+1+1	3+1+1	4+2 (25%-50% Scholarship)



# Placements

**PRIYANKA RAVULA**  
EEE - BATCH 2025



Placed at  
**Schneider Electric**

**MAMIDI SAI KIRAN**  
EEE - BATCH 2025



Placed at  
**K2**

**A.AKSHAY RAJ**  
EEE - BATCH 2025



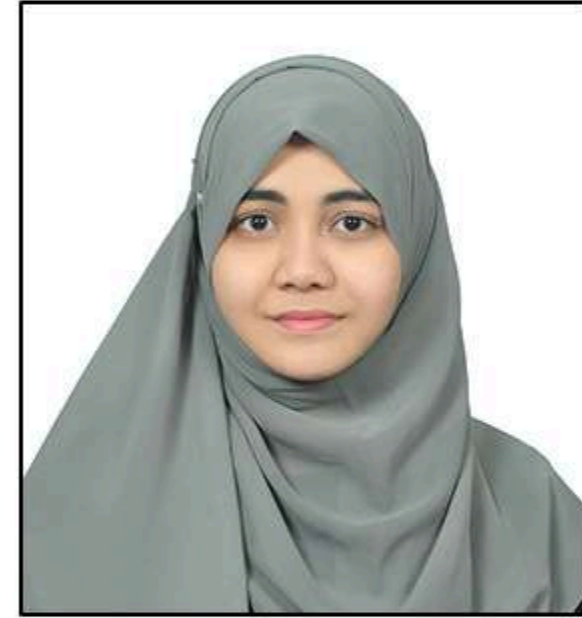
Placed at  
**BOSCH**

**PERUGU AKHIL**  
EEE - BATCH 2025



Placed at  
**K2**

**MUSKAN FATHIMA**  
EEE - BATCH 2025



Placed at  
**Schneider Electric**

**AJAY RAJ MARGAM**  
EEE - BATCH 2025



Placed at  
**K2**

**NEDUNURI SRUJANA**  
EEE - BATCH 2025



Placed at  
**BOSCH**

**ELLANDULA RISHITHA**  
EEE - BATCH 2025



Placed at  
**accenture**

**SAMEEYA SAMREEN**  
EEE - BATCH 2025



Placed at  
**K2**

**PITTALA BHAVANA**  
EEE - BATCH 2025



Placed at  
**savantis**

**ANKULA VINOD KUMAR**  
EEE - BATCH 2025



Placed at  
**K2**

**V. SAI KRISHNA**  
EEE - BATCH 2025



Placed at  
**K2**

**BUSIGAMPALA SAINATH**  
EEE - BATCH 2025



Placed at  
**CADSYS**

**SANJANA GAJULA**  
EEE - BATCH 2025



Placed at  
**K2**

**HIGHEST PACKAGE**  
**₹ 12 LPA**  
OFFERED BY  
**Schneider Electric**

**4 LPA**  
AVERAGE PACKAGE

**100+**  
INTERNSHIPS & PLACEMENTS

## CLUB & CENTER

Electrify Club and the Center for Emerging Energy Technologies provide a dynamic platform for students to innovate in electric mobility, renewable energy, and smart systems. Students work on real-time, industry-relevant projects under expert mentorship, fostering a strong undergraduate research culture.



**SRU**

**SR UNIVERSITY**

Ananthasagar, Hasanparthy  
Warangal 506371, Telangana, India

Contact for more info  
**+91 8331004040 / 3030**



**FIND OUT MORE**  
[www.sru.edu.in](http://www.sru.edu.in)

**/SR UNIVERSITY**