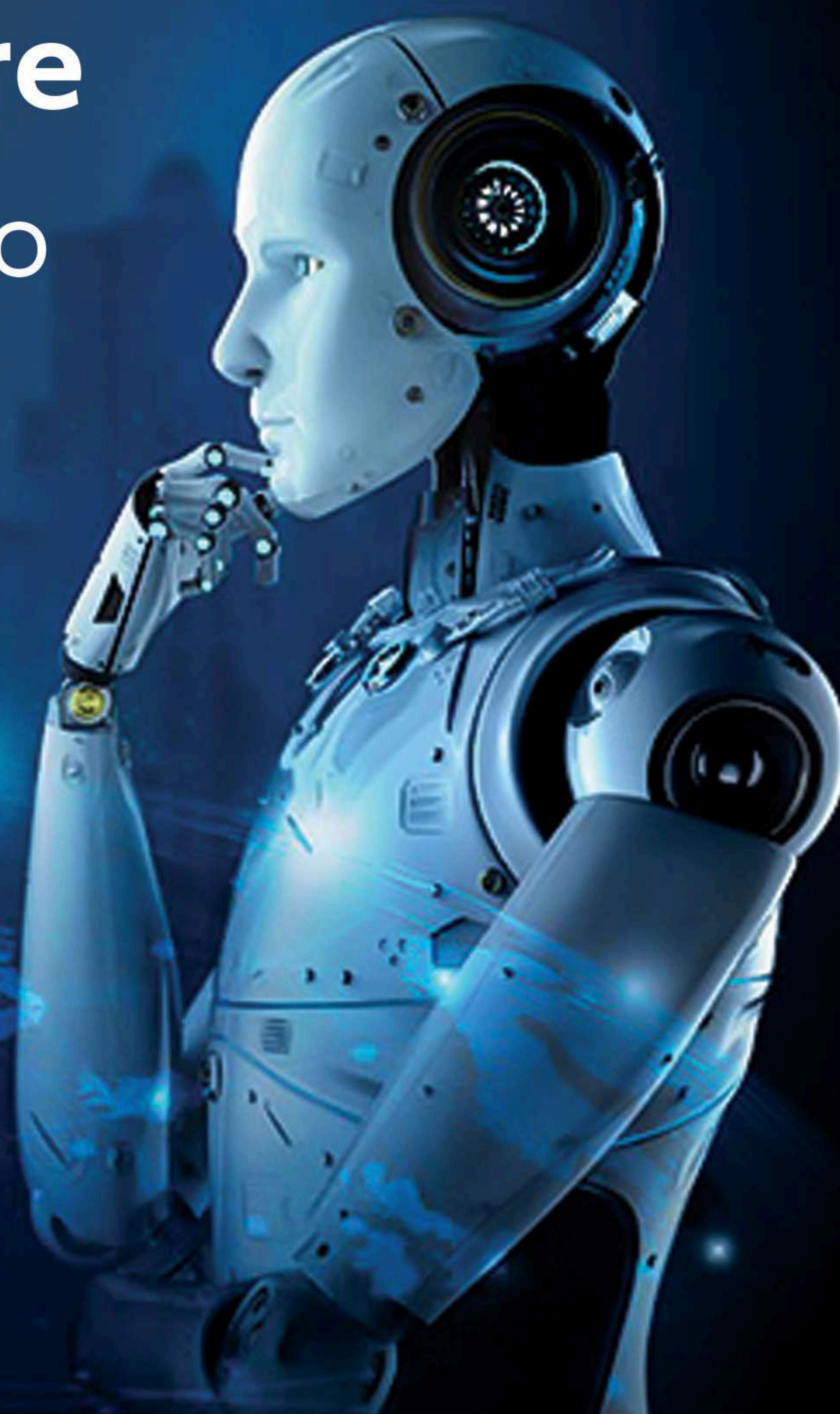


Building Smarter Connections for a Better Future

Inspiring minds to design the next generation of networks



SRU

ELECTRONICS AND
COMMUNICATION ENGINEERING
SCHOOL OF ENGINEERING

Partnership with

arm

Industry Collaborations



Electronics & Communication Engineering

Established in 2002, the Department of Electronics and Communication Engineering at SR University has evolved into a premier hub for education and research. With over 1,800 students enrolled annually across B.Tech, M.Tech, and Ph.D. programs, the department is recognized for its accomplished faculty, state-of-the-art laboratories, and strong global collaborations. It offers advanced programs in Artificial Intelligence, VLSI Design, and the Internet of Things (IoT).

Salient Features

- **Modern Curriculum:** Designed in alignment with Industry guidelines and continuously updated to reflect evolving technological trends.
- **Advanced Laboratories:** Well-equipped facilities in **VLSI, Embedded Systems, Communication Systems, IoT, Signal Processing, and AI applications.**
- **Project-Based Learning:** Emphasizes hands-on design, simulation, and prototyping using industry-standard tools and platforms.
- **Strong Industry Interface:** Regular engagement through **Guest lectures, Industrial Visits, Workshops, and Technical Festivals.**
- **Expert Faculty:** A dedicated team with rich experience in **Teaching, Research, and Industry Collaborations.**
- **Centers of Excellence:** Innovation hubs focusing on cutting-edge domains such as **Artificial Intelligence, IoT, and 5G Technologies.**
- **Skill Development Programs:** Value-added courses, certifications, and **Competitive Project Exhibitions** to enhance employability and innovation.
- **Robust Placement Support:** Excellent career opportunities in **Top Tech Companies, Core Electronics Industries, and Interdisciplinary Sectors.**
- **Collaborative Ecosystem:** Academic and industry partnerships fostering **Research, Internships, and Career Advancement and International Pathways**

Programmes Offered

Bachelors

- B.Tech. - Electronics and Communication Engineering
- B.Tech.(ECE) - Artificial Intelligence and Machine Learning
- B.Tech.(ECE) - VLSI Design

Masters

- M.Tech. (Embedded System)
- M.Tech. (Electronic Design Technology)
- M.Tech. (VLSI Design)

Doctoral

Ph.D. - Electronics and Communication Engineering



Research Highlights

Total No. of Publications
SCI / SCIE: 229

Total No. of Publications
Scopus: 758

Total No. of
Book Published

16

Total No. of
Book Chapters

68

Total No. of
Patents Granted

31

(6 Patents are Granted
with Students)

Total No. of
Patents Published

289

INTERNATIONAL ENGINEERING PROGRAM (IEP)

Make your choice:

3+1

Year 1, 2 & 3 - Study
at SR University
Year 4 - Study at
Partner Universities, USA



2+2

Year 1 & 2 Study
at SR University
Year 3 & 4 Study at
University of Missouri, USA



Faculty from world-class universities, including IITs, NITs, and IIITs.



Dr. Sandip Bhattacharya
Professor
Postdoc in Japan



Dr. Debabrata Mandal
Assistant Professor
Postdoc in Israel



Dr. Biswajit Mahanty
Associate Professor
Postdoc in South Korea



Dr. Raushan Kumar
Assistant Professor
Ph.D. from NIT Jamshedpur



Dr. Suresh Yarlagadda
Associate Professor
Ph.D. in BARC



Dr. Thaerbasha Shaik
Assistant Professor
Ph.D. from VIT-AP



Dr. Joydev Ghosh
Assistant Professor
Ph.D. from Thailand



Dr. Kallepelli Sagar
Assistant Professor
Ph.D. from NIT Warangal



Dr. Thyda Lavanya
Assistant Professor
Ph.D. from NIT Warangal



Dr. Uday Kumar Singh
Assistant Professor
Ph.D. from IIT Indore



Dr. Rusan Kumar Barik
Assistant Professor,
Ph.D. from IIITDM
Kancheepuram



Dr. Subhabrata Roy
Assistant Professor,
Ph.D. from Jadavpur
University



Dr. Suguru Pathinti Ramadevi
Assistant Professor,
Ph.D. from NIT Warangal



Dr. Partha Pratim Shome
Assistant Professor
Ph.D. from NIT Silchar

Academic Highlights

- A project-based curriculum designed to meet industry demands. Students can participate in hackathons, competitions, and maker-spaces to strengthen their practical skills. Workshops on industry-relevant topics are conducted regularly.
- Flexibility to customize your schedule and course sequence based on your interests, with the option to pursue minors in other departments.
- Cutting-edge, industry-focused courses such as:
 - **Artificial Intelligence & Machine Learning**
 - **Embedded Systems**
 - **Robotics and Automation.**
 - **VLSI**
 - **Signal and Image Processing**
 - **Wireless Communication**
- The iScholars program provides interdisciplinary experiential learning opportunities, helping SRU students gain the knowledge, skills, and confidence needed for professional success after graduation. It is designed to make students
- industry-ready and resilient for their future careers.

Memorandum of Understanding (MoU's)



Placements & Internships



Samsung India
Fellowship Program
J. Rathna Koushal
ECE - BATCH 2027



Samsung India
Fellowship Program
P. Charan Sai
ECE - BATCH 2027



Samsung India
Fellowship Program
S. Shivaprasad
ECE - BATCH 2027



Samsung India
Fellowship Program
Manipal Sabhavat
ECE - BATCH 2027



Infosys
Anitha Vasav
ECE - BATCH 2026



Infosys
Ch. Abhinav Reddy
ECE - BATCH 2026



MGH
N. Nireekshan Raj
ECE - BATCH 2026



MGH
P. Nanditha
ECE - BATCH 2026



Flipkart
N. Sanvitha
ECE - BATCH 2026



Flipkart
M. Harshini
ECE - BATCH 2026



Capgemini
A. Sai Kumar
ECE - BATCH 2025



Capgemini
Gopu Shylaja
ECE - BATCH 2025



Capgemini
D. Gayathri Ananyaa
ECE - BATCH 2025



Capgemini
E. Jashwanth
ECE - BATCH 2025



Capgemini
B. Aravind Reddy
ECE - BATCH 2025



Capgemini
Ram Sanjana
ECE - BATCH 2025



Capgemini
Sulgoori Anusha
ECE - BATCH 2025



Capgemini
Katanguri Vinay
ECE - BATCH 2025



CADSYS
P. Chakravarthi
ECE - BATCH 2025



CADSYS
G. Vinay Kumar
ECE - BATCH 2025



CADSYS
P. Harish
ECE - BATCH 2025

HIGHEST PACKAGE
₹ 14.5 LPA

HIGHEST INTERNSHIPS
₹ 20K Per Month

OFFERED BY



500+
PLACEMENTS

• 2 Students Plced with Packages ₹ 7 LPA

• 300+ Internships

• 5.5 LPA Average Package

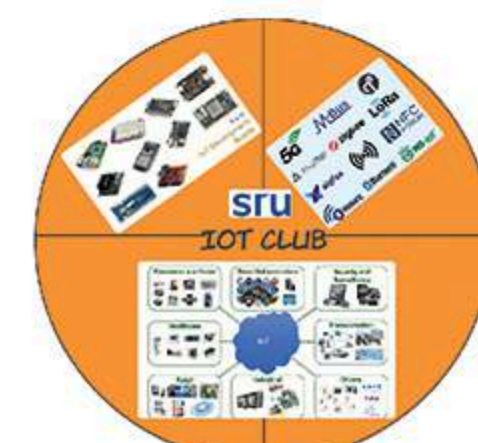
Startups, Centers and Clubs



IOT-SYSTEMS



TECH CONNECTORS



IOT WIZARDS



SOCIO-TECH
INNOVATIVE

Industrial Visits



SRU

Ananthasagar, Hasanparthy
Warangal 506371, Telangana, India

Contact for more info
+91 8331004040 / 3030



FIND OUT MORE
www.sru.edu.in

[f](#) [i](#) [t](#) [i](#) [n](#) [y](#) /SR UNIVERSITY