



SR
UNIVERSITY

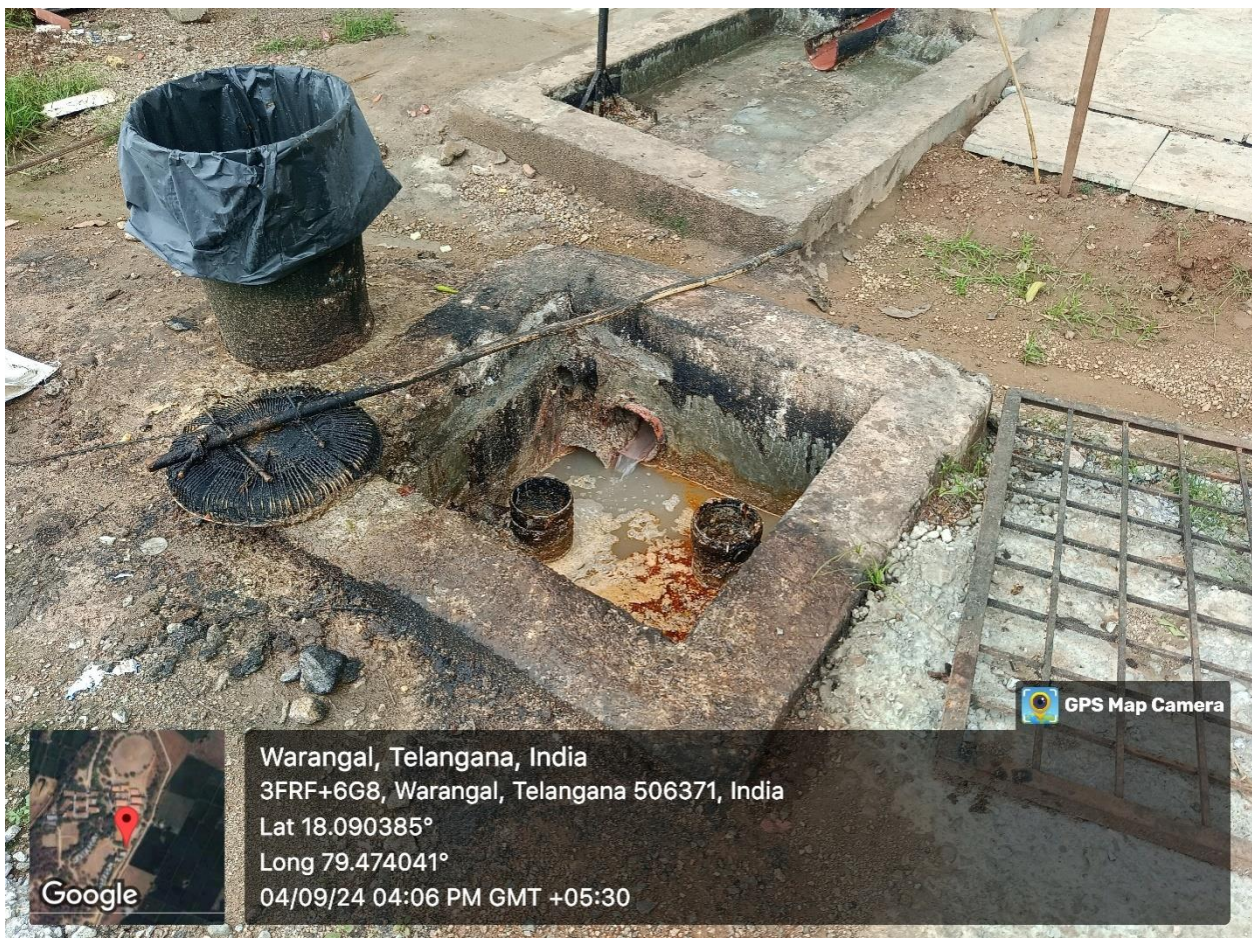
6.3.1 Waste Water Treatment

7.1.4. Water Conservation facilities available in the Institution

Waste Water Recycling

- SRU has an established potential of **1000 KLD** wastewater recycling capacity as of date.
- The wastewater generated on the campus was treated in the sewage treatment plants of **2 No's STP** with a handling capacity of **1000 KLD**.
- The sludge settled in the STPs is removed once a month and composted. The compost is used as manure for the gardens. Thus, the entire wastewater generated on the campus is well-treated and effectively used for gardening purposes.
- 20% of the total water demand of the campus is being met by treated water from STP, thus reducing the dependency on the fresh groundwater source.

Geo-tagged Photos:



Waste Water intake Pit near the Girls Hostel



Warangal, Telangana, India
3FRF+6G8, Warangal, Telangana 506371, India
Lat 18.090343°
Long 79.474183°
04/09/24 04:13 PM GMT +05:30

Reed bed system for Sewage Treatment



Sewage Treatment



Compost Pits for maintaining the Sludge